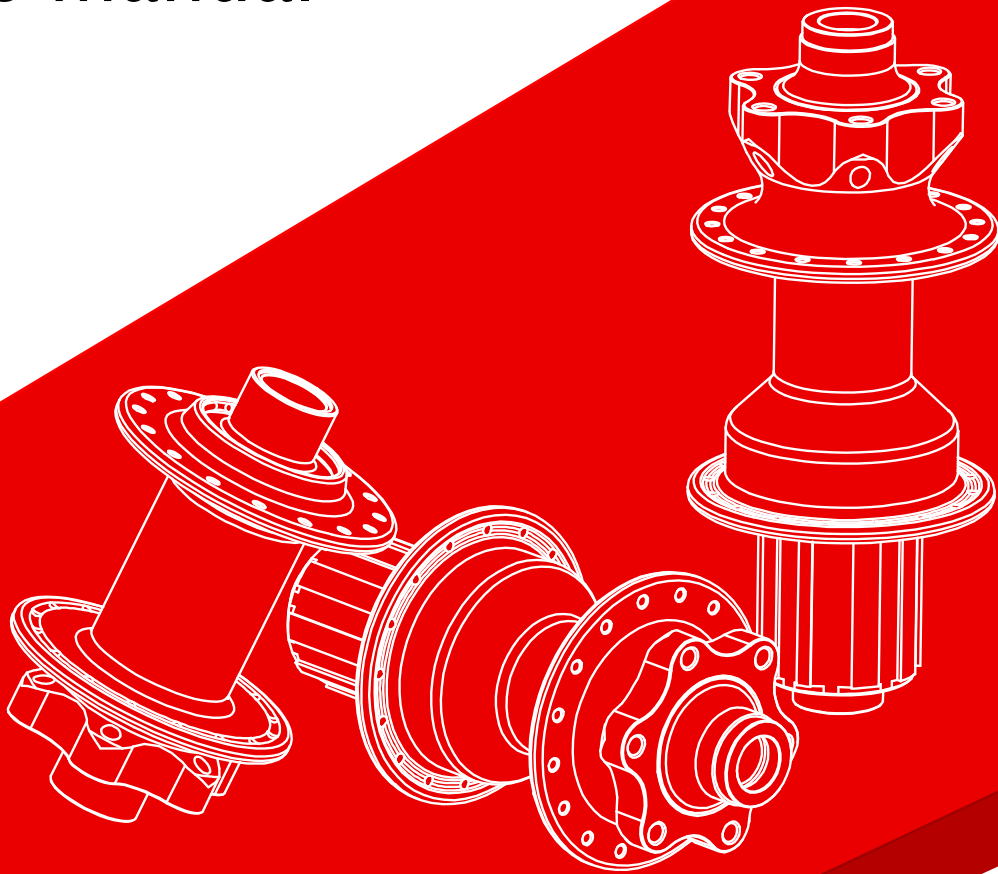


ciivee

CNC COMPONENTS

MT3 Hubs

User's manual



INTRODUCTION

The range of Aivee state of the art equipments is the result of the research and development department studies supervised by a team of enthusiasts, always attentive to the needs of users. Thus, the Aivee signature is the guarantee for quality on all roads, tracks and paths.

Aivee is based on three fundamentals: emotion, innovation and accessibility. Our challenge is to encourage emotion and give pleasure to the greatest number of athletes and enthusiasts. Our goal is uncompromising, render a premium brand accessible, affordable products, leading the way to adventure !

PRESENTATION

With the Aivee MT3 (for Mountain Bike), we wanted to create a hub with a very simple design without neglect the strength of the hub. MT3 hubs are very robust and they also have the Aivee finish. MT3 hubs have watertight bearings and are lubricated with a grease specially developed for our hubs. MT3 rear hubs have an increased number of engagement points, thanks to 3 pawls, they have 30 engagement points. With big size flanges, MT3 are also very stiff.

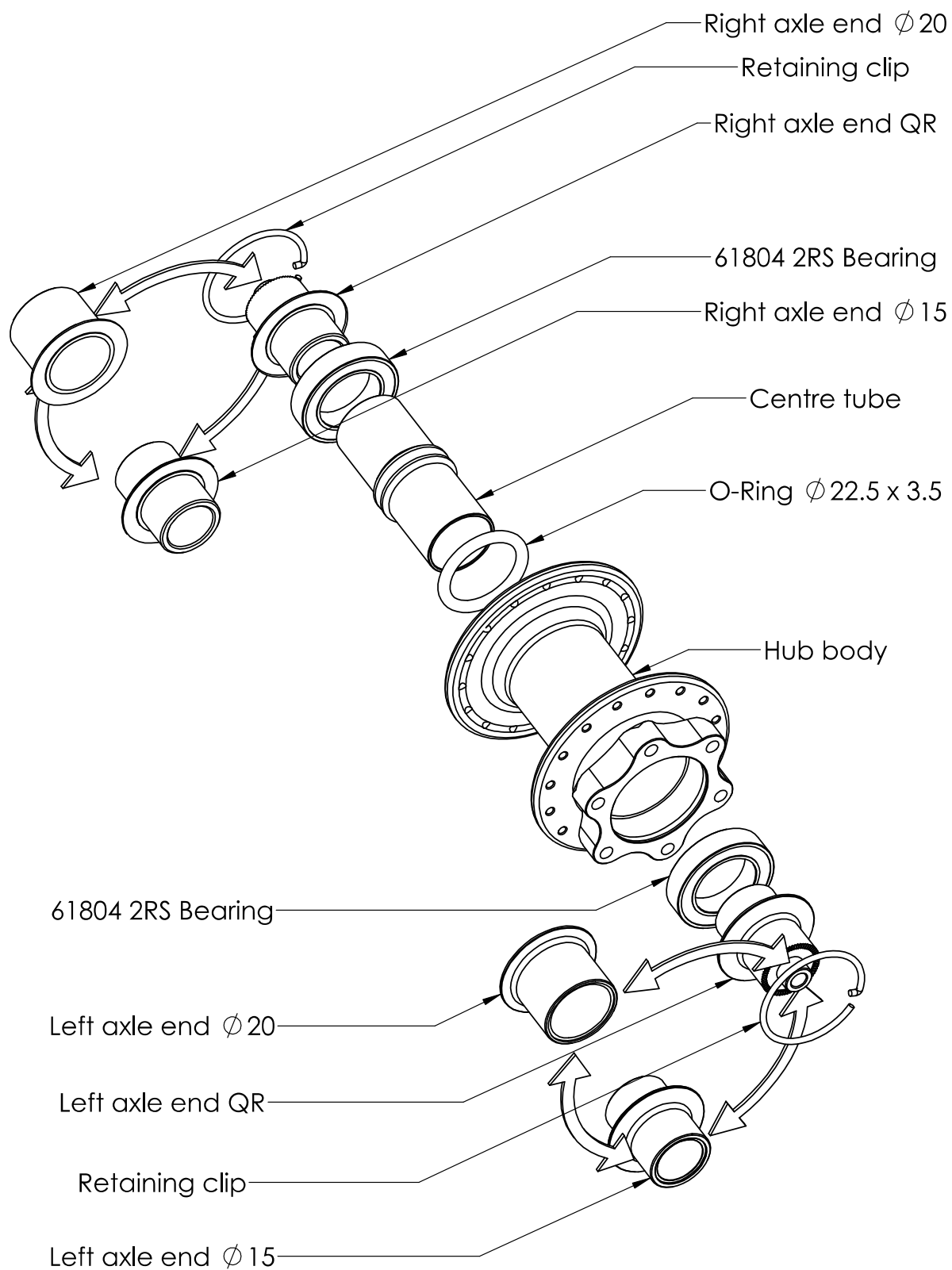
The MT3 range is a hub range made for MTB fanatics who search reliable equipment, with a simple design with the Aivee finish.

MOUNTING

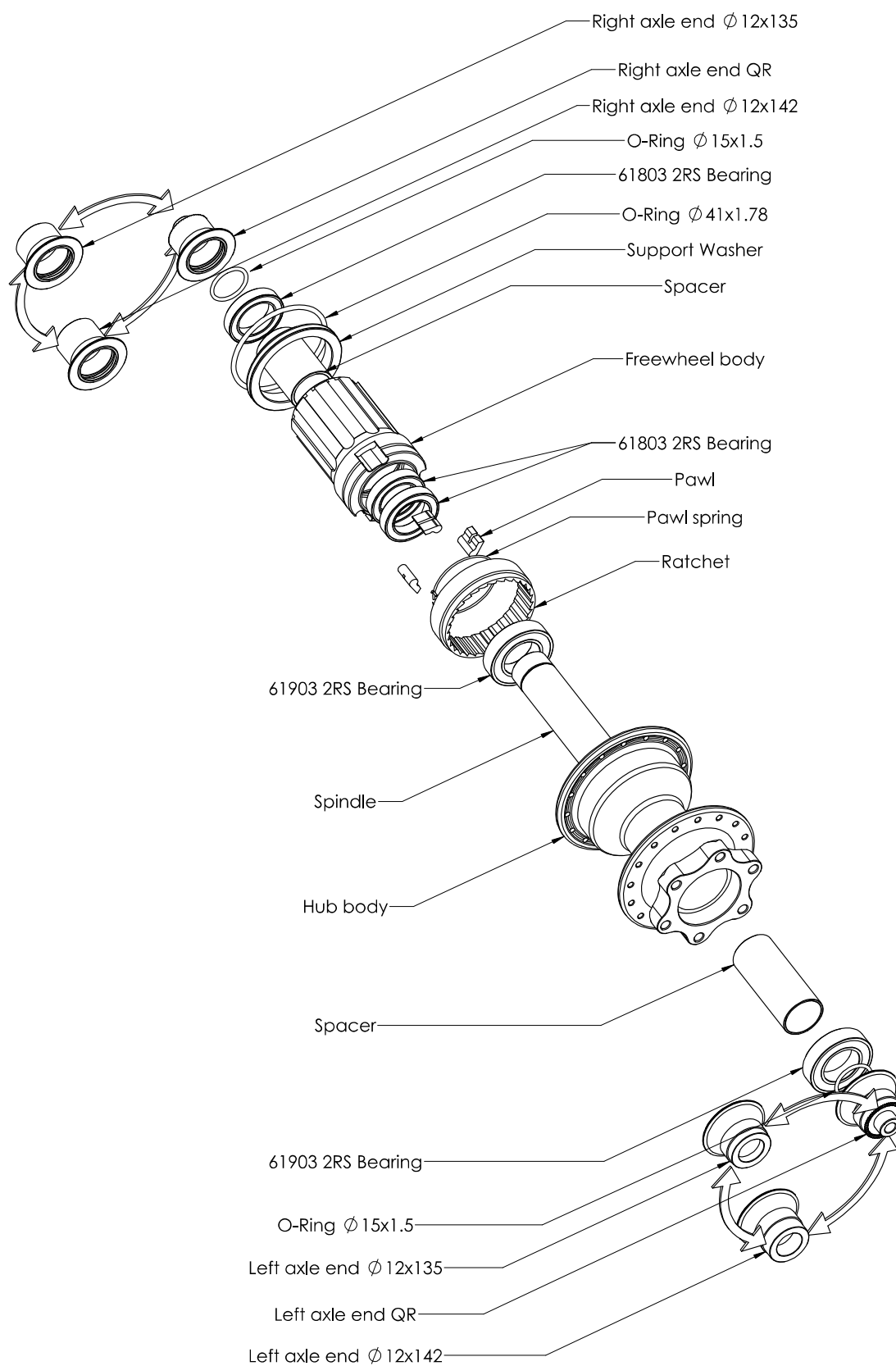
The spoke tension must not exceed 1200N. Aivee MT3 rear hubs and Aivee MT3 DH hubs are designed to work with a cassette which has a spider.



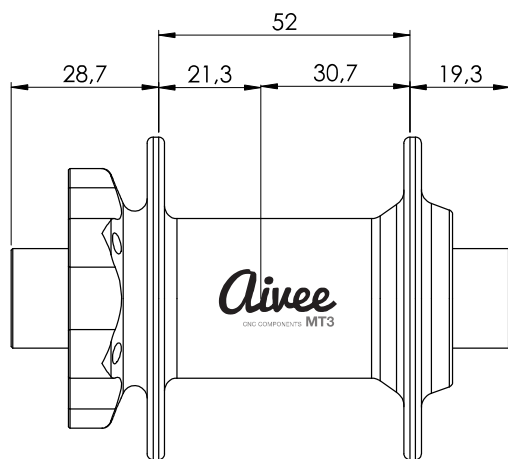
FRONT HUB



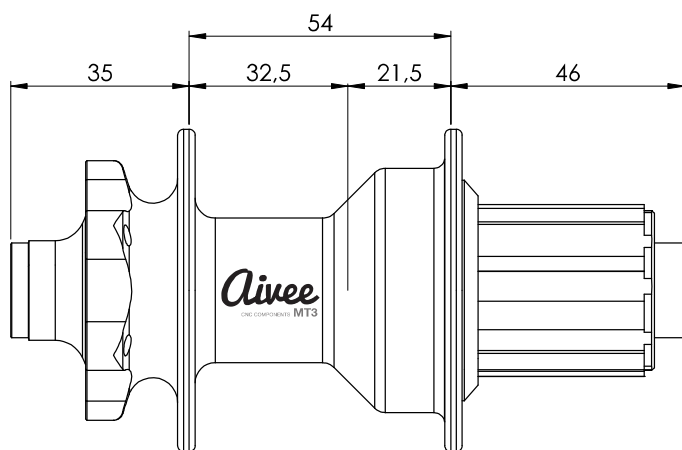
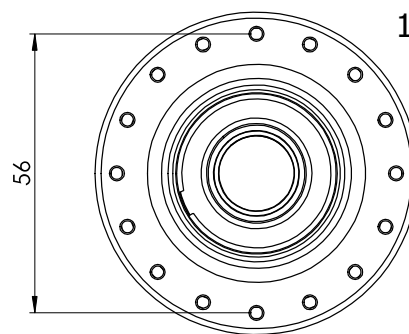
REAR HUB



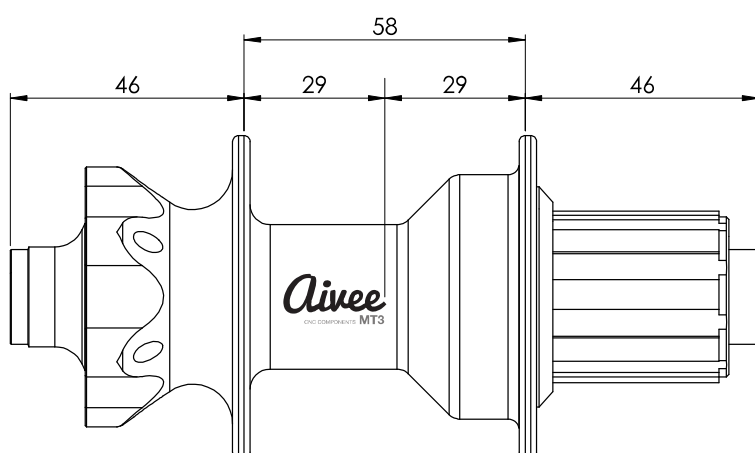
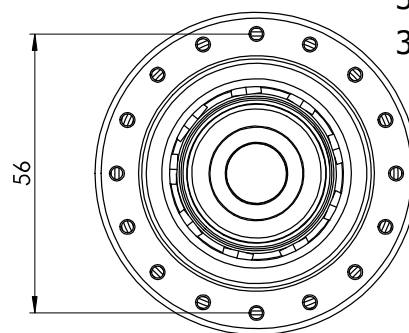
GEOMETRY



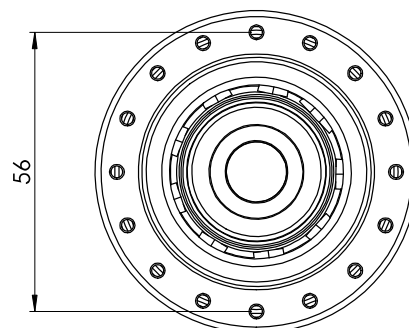
Weight : 184 g (QR)
176 g (Ø15)
169 g (Ø20)



Weight : 335 g (QR)
330 g (12x135)
333 g (12x142)



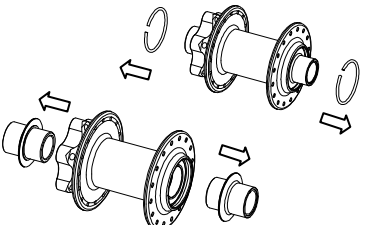
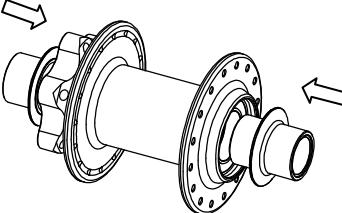
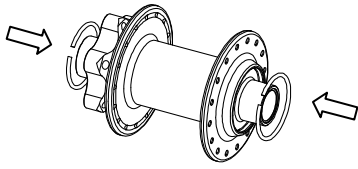
Weight : 369 g (12x150)



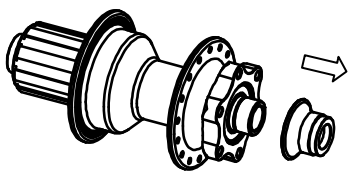
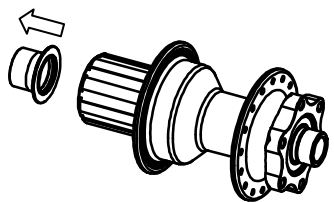
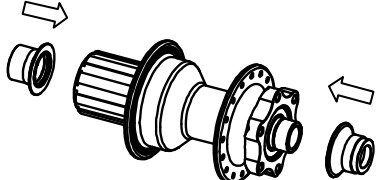
CONVERSION

The AIVEE Wasp hubs are compatible with 9 mm axle (QR), 15 mm axle and 20 mm axle for the front hub, with 10 mm axle (QR), 12 mm x 135 and 12mm x 142 for the rear hub. The conversion between all of these standards has been designed to simplify this task. It's very easy to change axle ends.

Front Hub

		
<p>a) Remove the retaining clip with needle nose pliers. b) Remove axle ends.</p>	<p>c) Put other axle ends into the hub until it bottoms out.</p>	<p>d) Put retaining clips into grooves of the hub.</p>

Rear Hub

		
<p>a) Remove the axle end mounted on the hub. If needed, pull strongly to take it away, it is due to the O-ring which holds in place the axle end.</p>	<p>b) Remove the other axle end with the same way.</p>	<p>c) Put new axle ends until it bottoms out.</p>



MAINTENANCE

MT3 hubs are designed to resist. With a little of maintenance, they will be more efficient. When you are accumulating muddy rides, don't hesitate to clean your hub.

Front Hub

To clean the front hub, you must remove easily axle ends. Then, remove the mud and the dust that can bother the bearing functioning. Grease elements and assemble the hub.

Rear Hub

To clean the rear hub, remove an axle. Remove the cassette body by pulling it. Then clean the ratchet and pawls if needed. Grease elements and assemble the cassette body into the hub body. Then put adapted axle ends.





SAFETY WARNING

This user manual contains important and useful information regarding the installation, operation and maintenance. Please read it carefully and follow the instruction of installation as detailed in this user guide.

If you have any doubt regarding your ability in installing, please consult your AIVEE dealer and seek the assistance of a professional bicycle mechanic.

Incorrect installation or use may impair performance and could result in a dangerous situation leading to serious injury or death. Components that have experienced excessive wear, deformation, impacts or any other damage, need immediate professional inspection and replacement by a new AIVEE component.

MAINTENANCE

Do not clean your hub with a high-pressure cleaner, this could cause water infiltration and the damaging of some components.

Inspect your AIVEE product before each ride check the dent and its looseness.

Parts after fall or crash should be inspected by professional bicycle mechanic.

WARNING

Continuing to use damaged parts may lead to loss of control and could cause serious injury or death.

Cyclists should inspect their bicycle and parts regularly. He should check bolts and other fasteners periodically for tightness, in order to determine the need for service and to detect any damage that may have occurred from normal use.

For more information, please contact us.



CNC COMPONENTS

Aivee S.A.S

Les Quatre Chemins de l'Oie BP 16-85140 Sainte Florence

Tél: (33) 2 51 66 10 29 - fax: (33) 2 51 66 08 01

E-mail: contact@Aivee.fr Web: www.Aivee.fr

