

Aivee

MP4 hubs User's manual



INTRODUCTION

The range of Aivee state of the art equipments is the result of the research and development department studies supervised by a team of enthusiasts, always attentive to the needs of users. Thus, the Aivee signature is the guarantee for quality on all roads, tracks and paths.

Aivee is based on three fundamentals: emotion, innovation and accessibility. Our challenge is to encourage emotion and give pleasure to the greatest number of athletes and enthusiasts. Our goal is uncompromising, render a premium brand accessible, affordable product, leading the way to adventure!

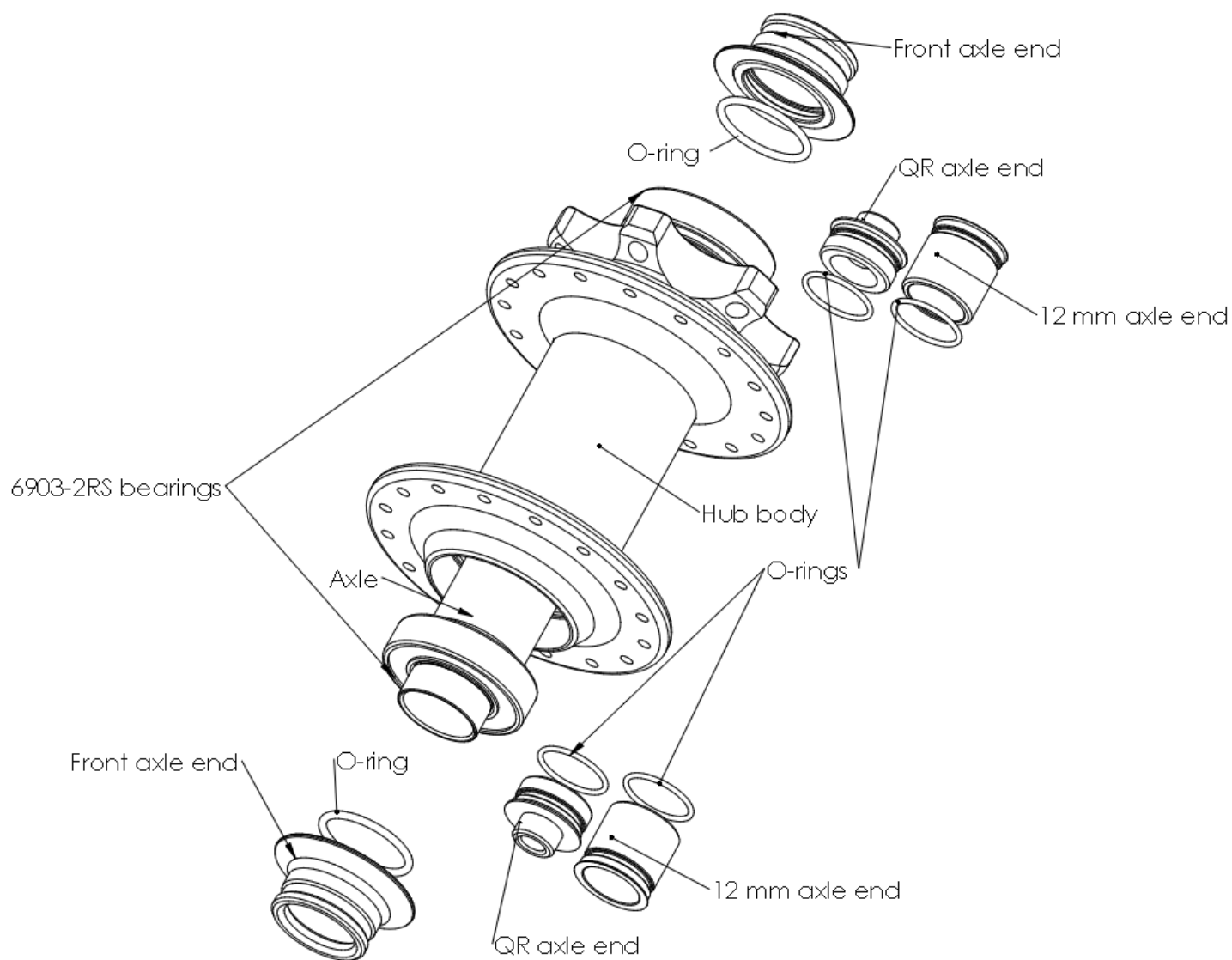
PRESENTATION

MP4 hubs have been designed to reach a simple target : create a polyvalent hub plugging AIVEE expertise back and keeping its signature look. On this MP4 we increase life expectancy, the stiffness and the hub geometry while keeping a moderate weight. Thanks to 6 pawls, hubs have been drawn to have 42 engagement points. Thanks to his versatility, MP4 can be built with Shimano, Sram XD or Campagnolo cassettes. Thus AIVEE MP4 hub is perfect to be ridden on long travel on road as well as hard mountain track. This challenge involve to improve our new hub for all these ground. To do this, Aivee MP4 hubs have watertight bearings lubricated with a grease specially developped for our hubs. The stiffness is improved by using big size flanges. Finally the geometry has been carefully designed to offer less stress in spokes and the hub as possible. The MP4 range is a hub range made for bike fanatics who search reliable equipment which guarantee the best geometry with a good ratio (weight / competitive cost).

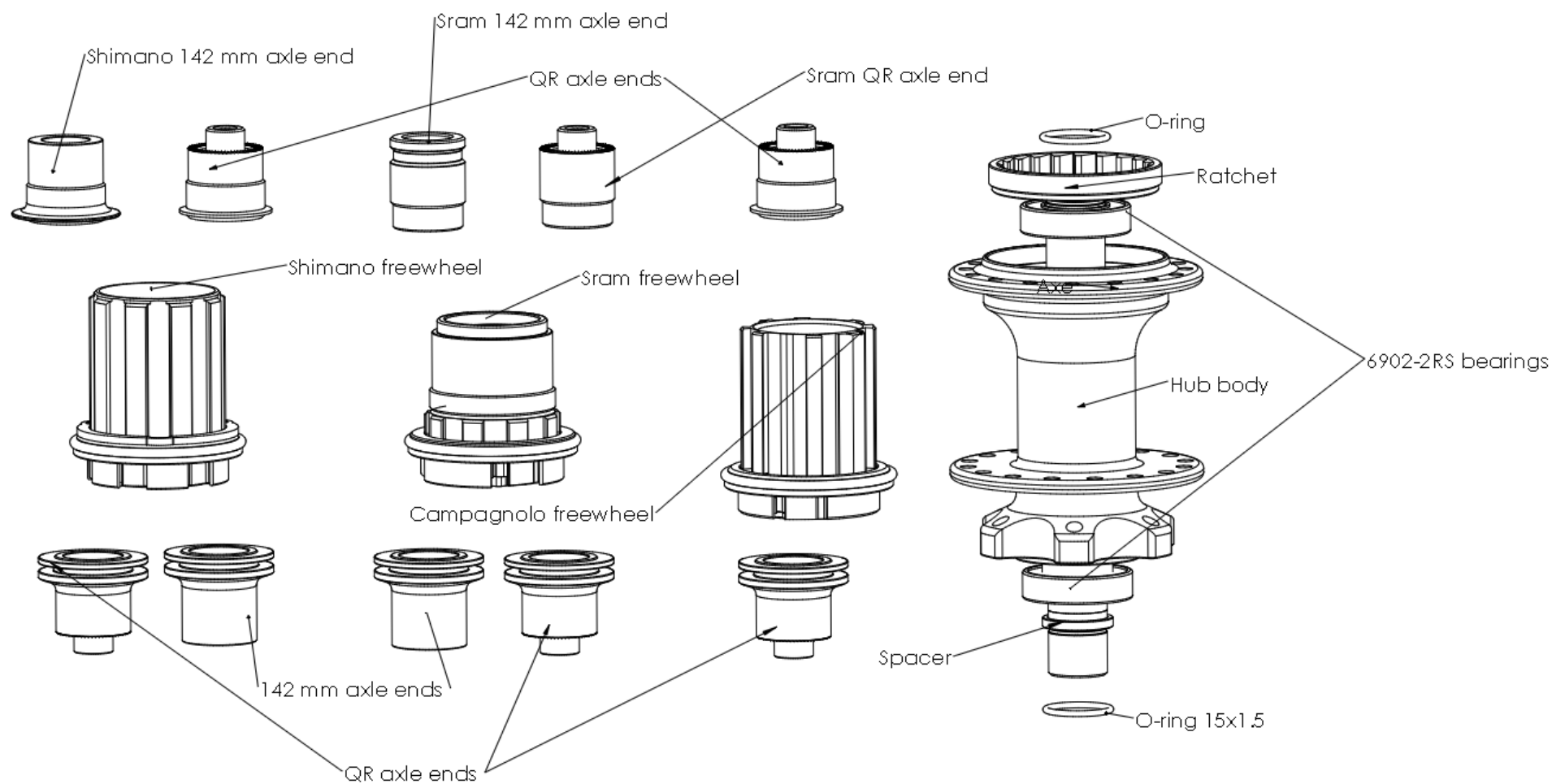
MOUNTING

In the interest of versatility, MP4 hubs are available in 24, 28 and 32 holes. The spoke tension must not exceed 1200N. Aivee MP4 rear hubs are designed to work with a cassette which has a spider.

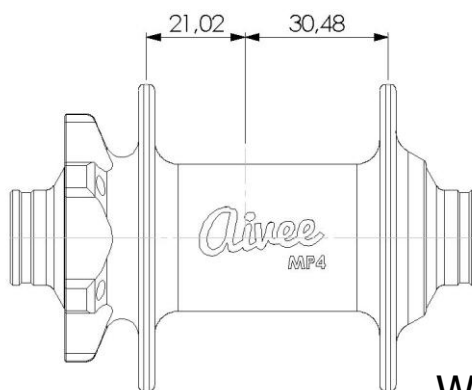
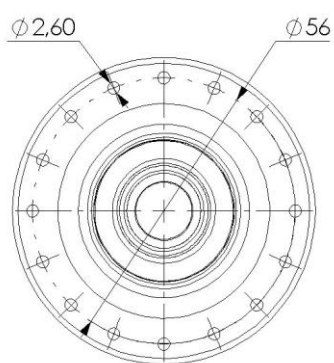
FRONT HUB STANDARD



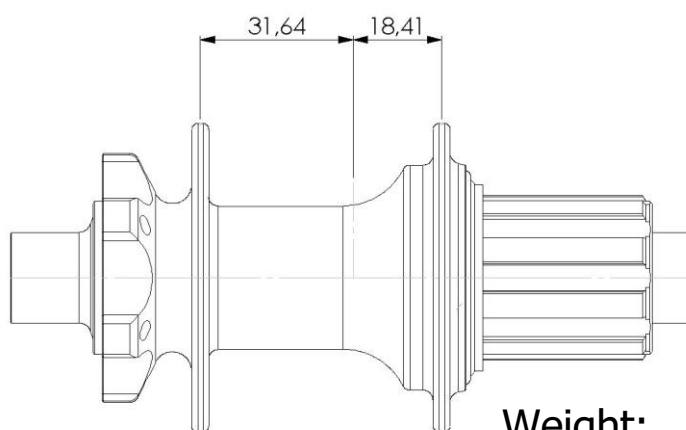
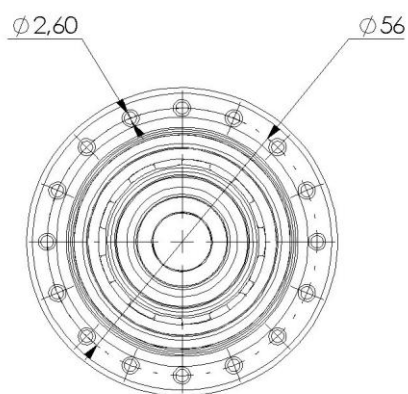
REAR HUB STANDARD



GEOMETRY / WEIGHT STANDARD

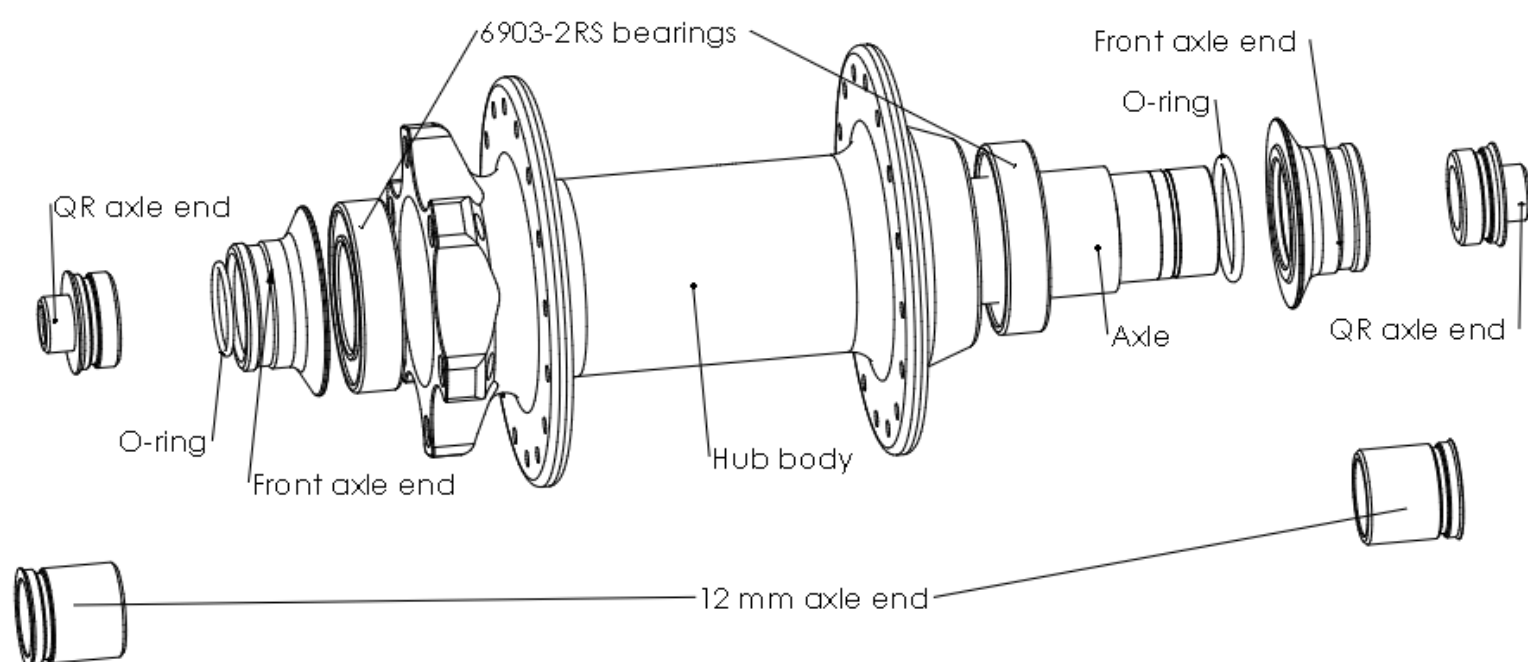


Weight:
170 g

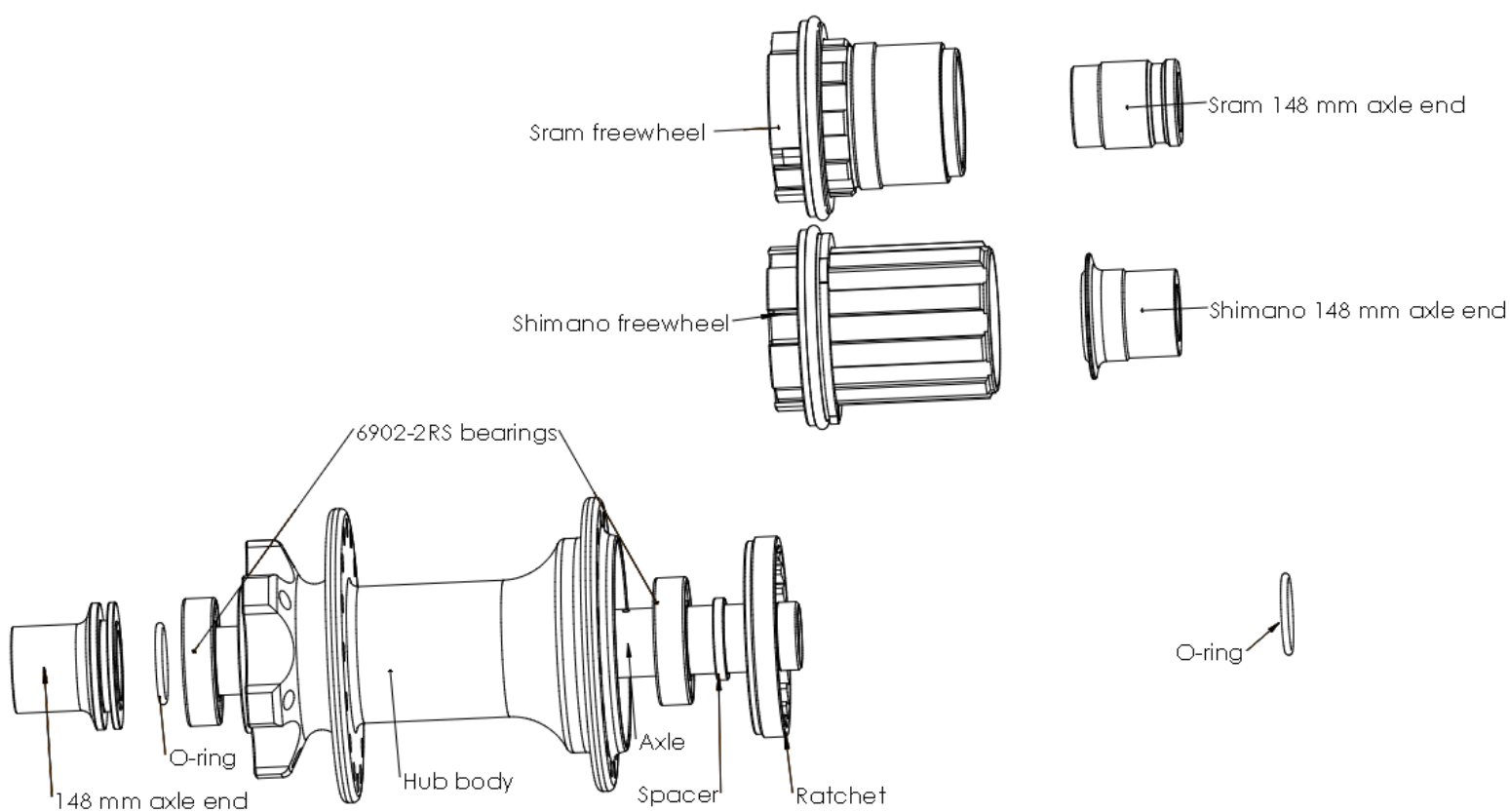


Weight:
300 g

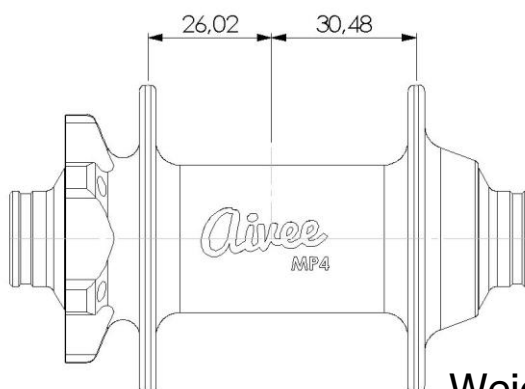
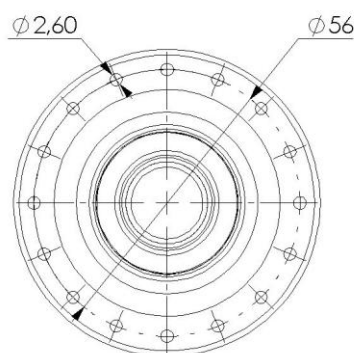
FRONT HUB BOOST



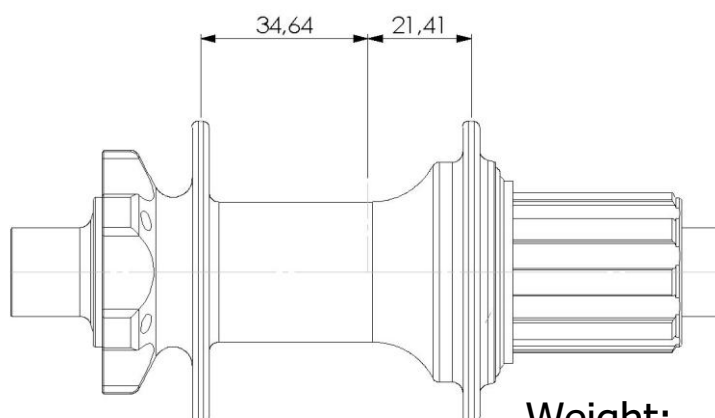
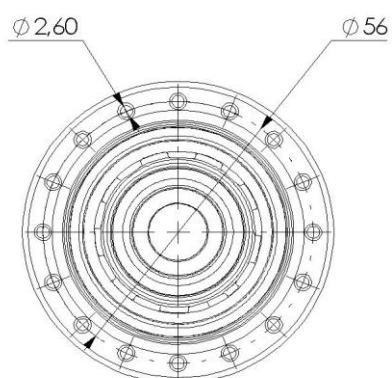
REAR HUB BOOST



GEOMETRY / WEIGHT BOOST

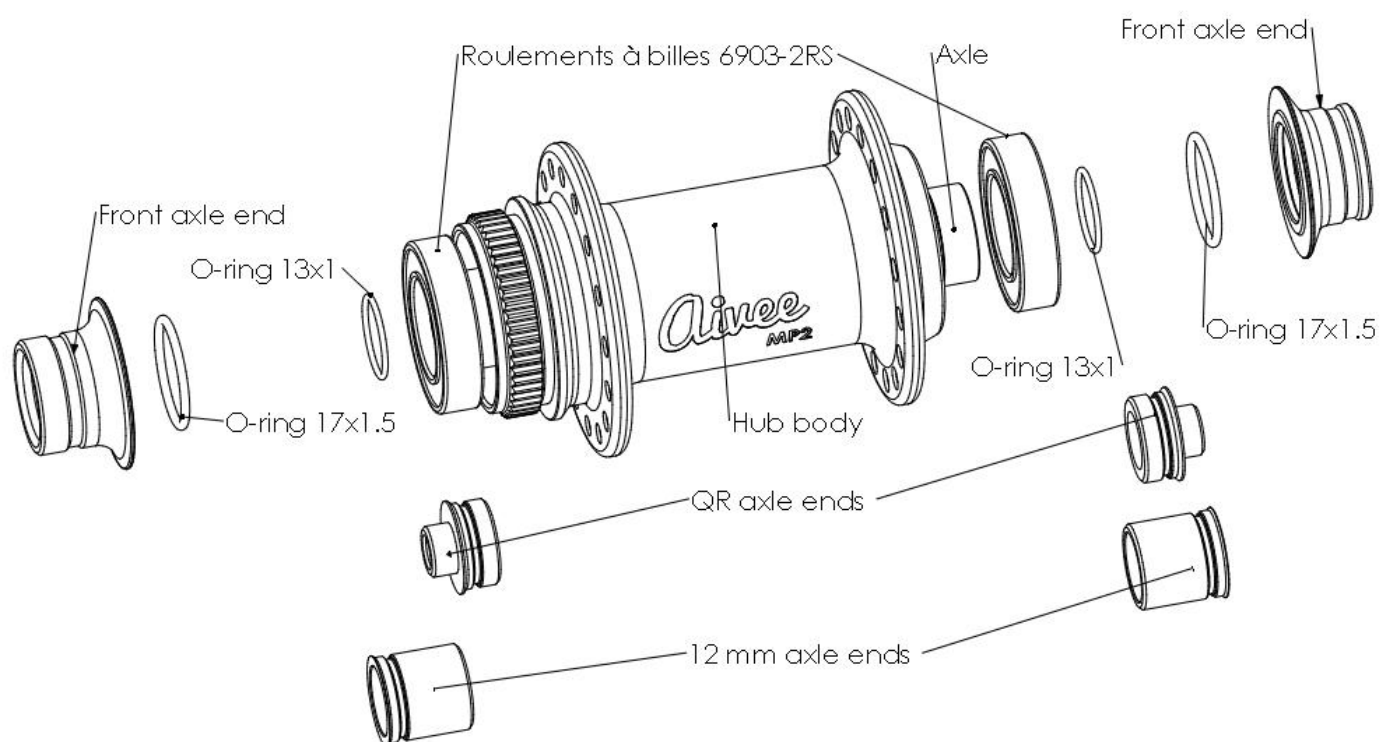


Weight:
175 g

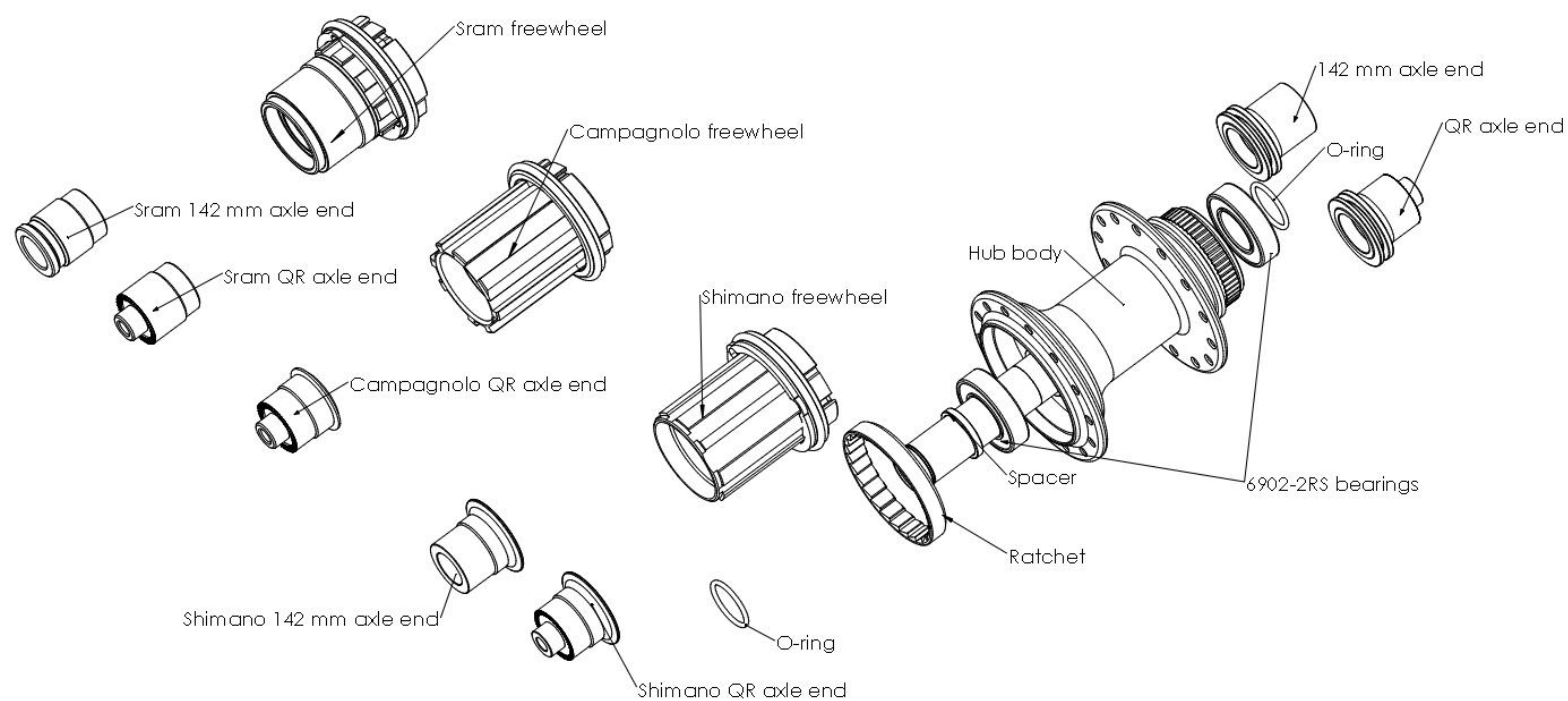


Weight:
305 g

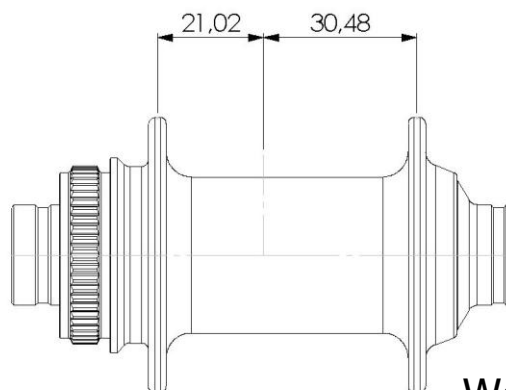
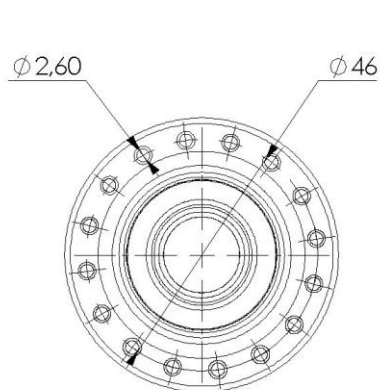
FRONT HUB CENTERLOCK



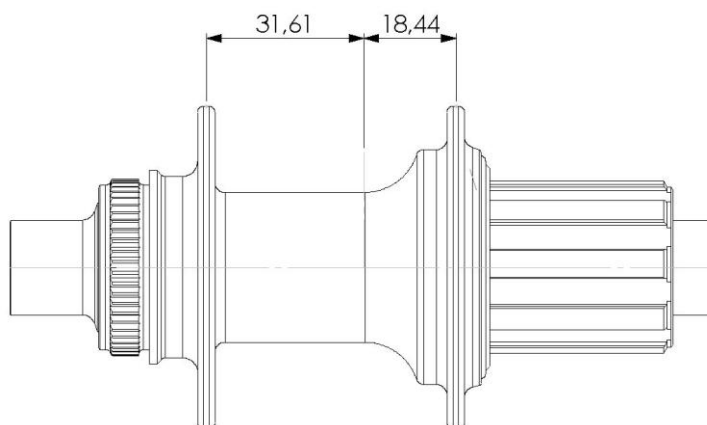
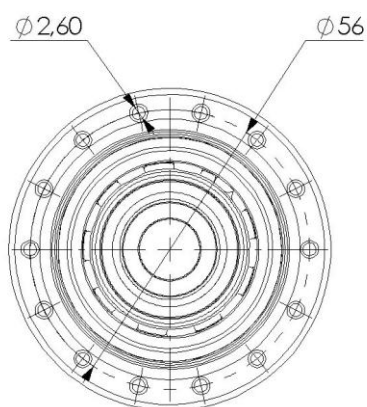
REAR HUB CENTERLOCK



GEOMETRY / WEIGHT CENTERLOCK



Weight:
145 g



Weight:
286 g

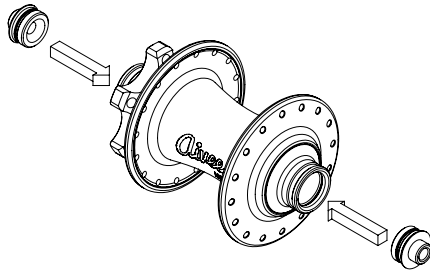
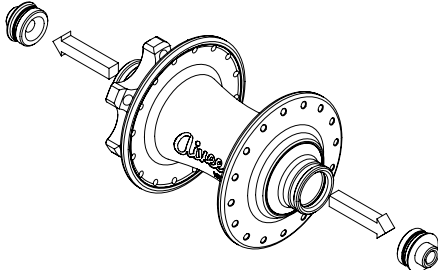
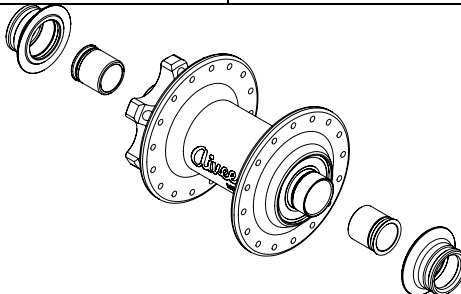
CONVERSION

MP4 hubs are compatible with 15 mm axle, 9mm axle with QR adapters and 12mm axle for the front hub, with 10 mm axle (QR) and 12mm x 142 for the rear hub. The conversion between all of these standards has been designed to simplify this task. It's very easy to change axle ends.

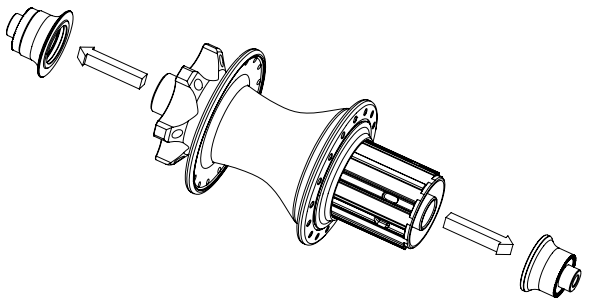
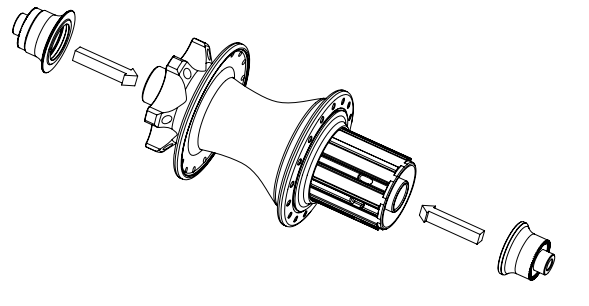
Note:

- Rear hubs are compatible with the XD standard via a specific freewheel body kit. It is possible to change the freewheel body by purchasing it separately.

Front hub

<p>Conversion 15mm to 9mm: - Put the QR adapters on the axle ends.</p>	<p>Conversion 9mm to 15mm: - Remove the QR adapters from the axle ends.</p>
	
<p>Conversion 15mm to 12mm: - Put the 12 adapters on the axle ends.</p>	<p>Conversion 12mm to 15mm: - Remove the 12 adapters from the axle ends.</p>
	

Rear hub

<p>a) Remove the axle end mounted on the hub (QR or 12x142). If needed, pull strongly to take it away, it is due to the O-ring which holds in place the axle end.</p>	<p>b) Put wanted axle ends until it bottoms out. c) Check if the lip seal is well mounted and in good order.</p>
	

MAINTENANCE

AIVEE MP4 hubs are designed to resist. With a little of maintenance, they will be more efficient. When you are accumulating muddy rides, don't hesitate to clean your hub.

Front hub

To clean the front hub, you might remove easily axle ends and lip seals from the hub. Then, remove the mud and the dust that can bother the bearing working. Grease elements and assemble the hub.

Rear hub

To clean the rear hub, remove an axle end. Remove the cassette body by pulling it. Then clean the ratchet and pawls if needed. Lubricate with Aivee special grease the ratchet and pawls assemble the cassette body into the hub body. Then put adapted axle ends.

SAFETY WARNING

This user manual contains important and useful information regarding the installation, operation and maintenance. Please read it carefully and follow the instruction of installation as detailed in this user guide. If you have any doubt regarding your ability in installing, please consult your AIVEE dealer and seek the assistance of a professional bicycle mechanic.

Incorrect installation or use may impair performance and could result in a dangerous situation leading to serious injury or death. Components that have experienced excessive wear, deformation, impacts or any other damage, need immediate professional inspection and replacement by a new AIVEE component.

MAINTENANCE

Do not clean your hub with a high-pressure cleaner, this could cause water infiltration and the damaging of some components.

Inspect your AIVEE product before each ride check the dent and its looseness.
Parts after fall or crash should be inspected by professional bicycle mechanic.

WARNING

Continuing to use damaged parts may lead to loss of control and could cause serious injury or death. Cyclists should inspect their bicycle and parts regularly. He should check bolts and other fasteners periodically for tightness, in order to determine the need for service and to detect any damage that may have occurred from normal use.

For more information, please contact us.

Aivee

Aivee S.A.S

Les Quatre Chemins de l'Oie BP 16-85140 Sainte Florence France

Phone: (33) 2 51 66 10 29 - fax : (33) 2 51 66 08 01

E-mail : contact@Aivee.fr Web: www.Aivee.fr